

SOFIA SERRANO

PAPER CRAFT DESIGNER
GRAPHIC DESIGNER
TYPOGRAPHER
MODEL MAKER
ILLUSTRATOR
•••

SOFIA SERRANO

hello@heyheypops.com
heyheypops@gmail.com
+44 (0) 7532270859

LONDON BASED



SONIA RODRIGUEZ

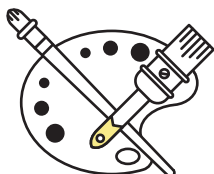
1ST AND 2ND ASSISTANT CAMERA

EDUCATION



BILINGUAL EDUCATION

NEWTON COLLEGE
ELCHE (ALICANTE)
1991 - 2004



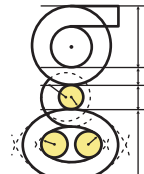
DEGREE ON FINE ARTS

PUPIL OF ANTONIA HENAREJOS
UNIVERSIDAD POLITÉCNICA DE VALENCIA
VALENCIA & BARCELONA
2004 - 2009



POSTGRADUATE

EDITORIAL DESIGN
ELISAVA, BARCELONA
2010



MASTERS OF THE UNIVERSE

TYPOGRAPHY
EINA, BARCELONA
2011 - 2012

FURTHER TRAINING

1/ PACKAGING

BY JUAN ARAQUE
UPV, VALENCIA
NOV 2006 - JAN 2007

2/ WEB DESIGN

SERVEF
ELCHE (ALICANTE)
JUL 2007 - AUG 2007

3/ TYPOGRAPHY

BY DÍDAC BALLESTER
UPV, VALENCIA
NOV 2008 - DEC 2008

4/ TYPOGRAPHY

BY CATHERIN DIXON
CENTRAL SAIN MARTINS
OCT 2009 - DEC 2009

5/ PRINT MAKING

BY WENDY CHAPPLE
CENTRAL SAIN MARTINS
JAN 2010 - FEB 2010

6/ MODEL MAKING

BY DAVID NEAT
CENTRAL SAIN MARTINS
JUL 2013

CLIENTS & PROJECTS

SHOTOPOP

INTERNSHIP & EMPLOYEE
LONDON
ILLUSTRATOR & DESIGNER
FEB 2012 - JAN 2013

FREELANCING SINCE:
BIOCOOP
APPS MAGAZINE
LION
PEPSICOLA

www.shotopop.com

HEY POPS

DIRECTOR
LONDON
ILLUSTRATOR & DESIGNER
2013 - PRESENT TIME

www.heyheypops.com

CRAWLEY CREATURES

NATURAL HISTORY MUSEUM OF QATAR
www.crawley-creatures.com

CATFISH COLLECTIVE

CHEERIOS CAMPAIGN
TOBLERONE CAMPAIGN
C&A ANIMATION

www.catfishcollective.co.uk

GIGGLEFISH PRODUCTIONS

MANGO THE FILM

LOOSE MOOSE

TOBLERONE CAMPAIGN
C&A ANIMATION

www.loosemoose.net

ROWDY PRODUCTIONS CLAPHAM ROAD STUDIOS

THE WIND IN THE WILLOWS

www.claphamroadstudios.co.uk

ARCH MODEL STUDIO

ISLE OF DOGS THE MOVIE
TK MAXX
MONEY SUPERMARKET
CHEERIOS
SIPSMITH
CORONA
EXXON
HONEST TEA

PASSION PICTURES

MONEY SUPER MARKET
HONEST TEA

www.passion-pictures.com

NEXUS

CORONA
EXXON
CHEERIOS

www.nexusstudios.com

SCENIC SETS

LOUIS VUITTON
DIOR

scenicsets.com

OTHER INTERESTS

ROWING

UPV UNIVERSITY TEAM
2006 - 2009



DANCE · OPERA · DRAMA · MUSIC

CLASSICAL BALLET
1988 - 2000

MEMBER OF THE WOODHOUSE PLAYERS
www.woodhouseplayers.co.uk

BLOG
www.clapattheend.blogspot.com

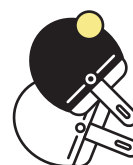


TABLE TENNIS

DAMA DE ELCHE TEAM
1996 - 2002

NATIONAL CHAMPIONSHIP
1991

**HIRE ME!
OR I'LL DIE**

